



Job Name:		Contractor:	
Location:		Distributor:	
Engineer:		Date:	
Submitted To:		Model No:	Max 70 "e"
Schedule ID:		No. of Outlets:	

SUBMITTAL DATA SHEET

Max Air Specifications	Max 70-"e"
BTUH Heating @ 180°F E.W.T.	77,981
BTUH Heating @ 170°F E.W.T.	69,804
BTUH Heating @ 160°F E.W.T.	58,902
BTUH Heating @ 150°F E.W.T.	50,519
BTUH Heating @ 140°F E.W.T.	46,278
BTUH Heating @ 130°F E.W.T.	41,000
DX Cooling (tons) ⁽¹⁾	2.0 - 2.5
Power	120/1/60
C.F.M. @ 1.5" E.S.P.	750
HP - RPM (fan)	3/4 HP (ECM - DC voltage)
Amps @ 120/1/60	9.9 FLA
G.P.M. Flow Rating	7
Copper Connection Size Ø	1/2"
Supply Air Connection - top	8" ⁽²⁾
Minimum Outlets	16 ⁽³⁾
Maximum Outlets	20
Return Air Size Required	16" x 15" min.
Physical Dimensions (L/W/H)	36"x19-1/2"x18"

(1) smaller condensers may be matched to fan coil when required (match txv to condensor size)

(2) dual outlet option available

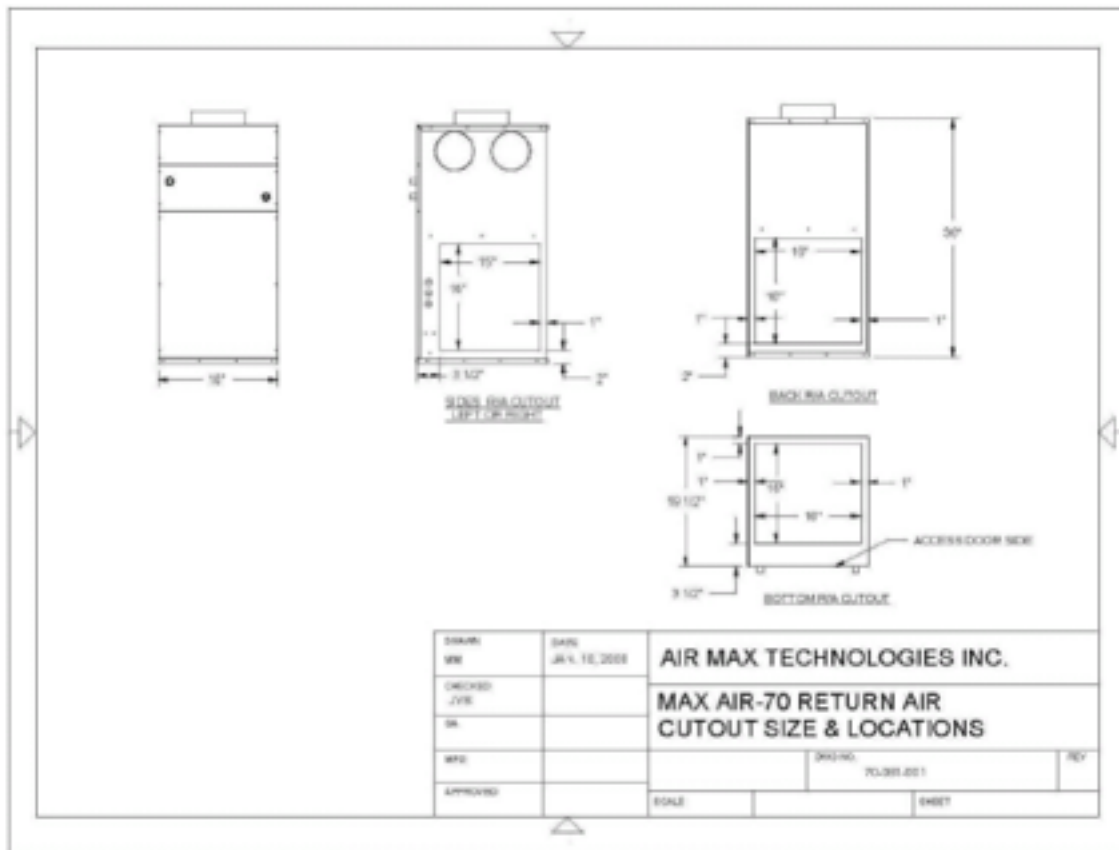
(3) The median number of outlets should be used to achieve maximum DX cooling capacity for each model size

Features

Accurate Temperature Control / Heating, Cooling or Heating/Cooling Applications / Multi-positional placement / Easily Installed / Easily Serviced / Flexible Outlet locations / Fully adjustable Supply / Multiple Return Options / Compact Size / Extensive Warranty

Accessories

QTY.	Description	R-22	R-410a
	MA30-70 DX Coil c/w self adjusting TXV and Freezestat		
	Diffuser c/w Damper Floor Extension (1.75")		
	Circulating pump (c/w check valve) 3/4" sweat - field installed		



Warranty

1 Year Parts and Labour, plus additional 12 months parts only, where applicable

NOTES: _____

71 Innovation Drive, Unit 8 & 9. Vaughan, Ontario, L4H 0S3. Tel: 905-264-1414, Fax:
905-264-1147