



Job Name:		Contractor:	
Location:		Distributor:	
Engineer:		Date:	
Submitted To:		Model No:	<b>MAX 50 "e"</b>
Schedule ID:		No. of Outlets:	

## SUBMITTAL DATA SHEET

<b>Max Air Specifications</b>	<b>Max 50 "e"</b>
BTUH Heating @ 180°F E.W.T.	55,649
BTUH Heating @ 170°F E.W.T.	49,971
BTUH Heating @ 160°F E.W.T.	44,700
BTUH Heating @ 150°F E.W.T.	39,086
BTUH Heating @ 140°F E.W.T.	35,195
BTUH Heating @ 130°F E.W.T.	30,250
DX Cooling (tons) <sup>(1)</sup>	1.0(**) – 2.0
Power	120/1/60
C.F.M. @ 1.5" E.S.P.	580
HP – RPM (fan)	1/2 HP (ECM – DC voltage)
Amps @ 120/1/60	7.7 FLA
G.P.M. Flow Rating	5
Copper Connection Size Ø	1/2"
Supply Air Connection – top	8" <sub>(2)</sub>
Minimum Outlets	13 <sub>(3)</sub>
Maximum Outlets	<b>17</b>
Return Air Size Required	12" x 14" min.
Physical Dimensions (L/W/H)	30"x14"x18-1/2"

(1) smaller condensers may be matched to fan coil when required ( match txv to condensor size)

(2) dual outlet option available

(3) The median number of outlets should be used to achieve maximum DX cooling capacity for each model size

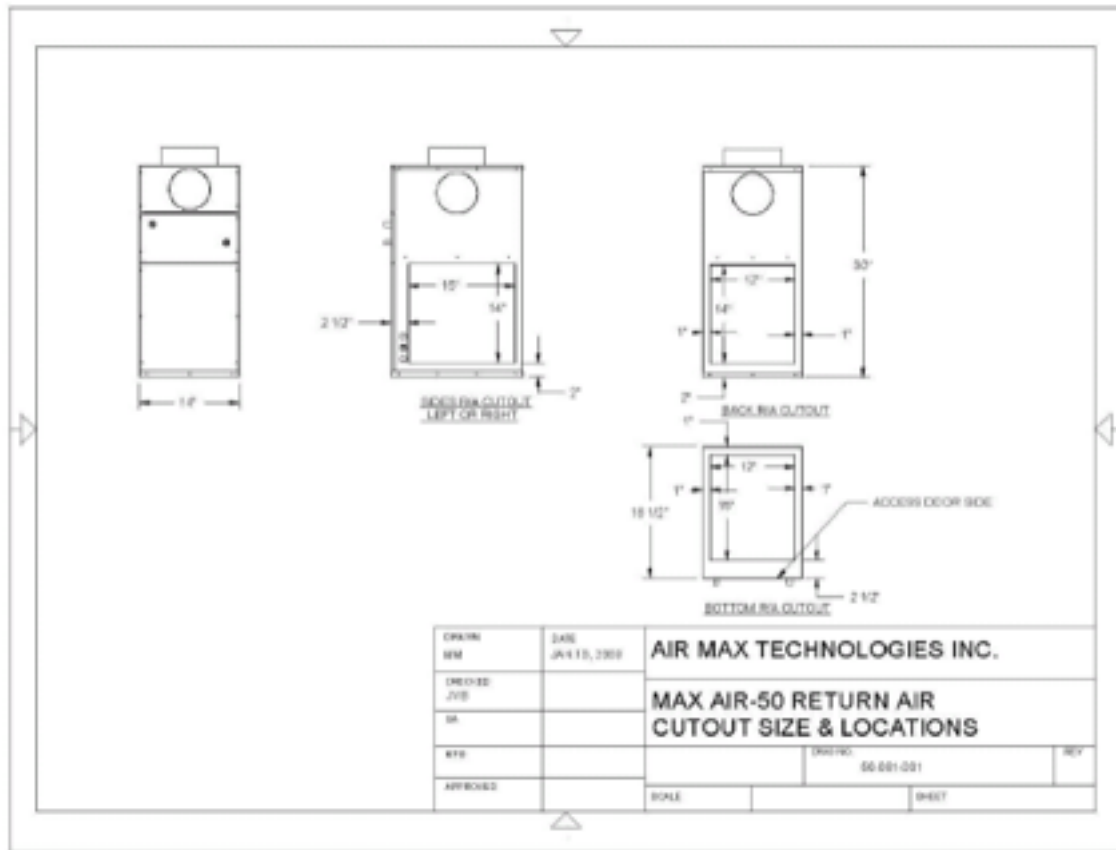
(\*\*) consult factory for 1 ton application regarding reduce capacity and outlet requirement

**Features**

Accurate Temperature Control / Heating, Cooling or Heating/Cooling Applications / Multi-positional placement / Easily Installed / Easily Serviced / Flexible Outlet locations / Fully adjustable Supply / Multiple Return Options / Compact Size / Extensive Warranty

**Accessories**

QTY.	Description	R-22	R-410a
	MA24-50 DX Coil c/w self adjusting TXV and Freezestat		
	Diffuser c/w Damper		
	Floor Extension (1.75")		
	Circulating pump (c/w check valve) 1/2" sweat - field installed		



**Warranty**

1 Year Parts and Labour, plus additional 12 months parts only, where applicable

NOTES: \_\_\_\_\_

\_\_\_\_\_

\_\_\_\_\_

\_\_\_\_\_

71 Innovation Drive, Unit 8 & 9. Vaughan, Ontario, L4H 0S3. Tel: 905-264-1414, Fax:  
905-264-1147