



Job Name:		Contractor:	
Location:		Distributor:	
Engineer:		Date:	
Submitted To:		Model No:	MAX 50
Schedule ID:		No. of Outlets:	

SUBMITTAL DATA SHEET

Max Air Specifications	Max 50
BTUH Heating @ 180°F E.W.T.	55,649
BTUH Heating @ 170°F E.W.T.	49,971
BTUH Heating @ 160°F E.W.T.	44,700
BTUH Heating @ 150°F E.W.T.	39,086
BTUH Heating @ 140°F E.W.T.	35,195
BTUH Heating @ 130°F E.W.T.	30,250
DX Cooling (tons) ⁽¹⁾	1.0(**) – 2.0
Power	120/1/60
C.F.M. @ 1.5" E.S.P.	580
HP – RPM (fan)	1/2 – 1625
Amps @ 120/1/60	6.2
G.P.M. Flow Rating	5
Copper Connection Size Ø	1/2"
Supply Air Connection – top	8" ₍₂₎
Minimum Outlets	13 ₍₃₎
Maximum Outlets	17
Return Air Size Required	12" x 14" min.
Physical Dimensions (L/W/H)	30"x14"x18-1/2"

(1) smaller condensers may be matched to fan coil when required (match txv to condensor size)

(2) dual outlet option available

(3) The median number of outlets should be used to achieve maximum DX cooling capacity for each model size

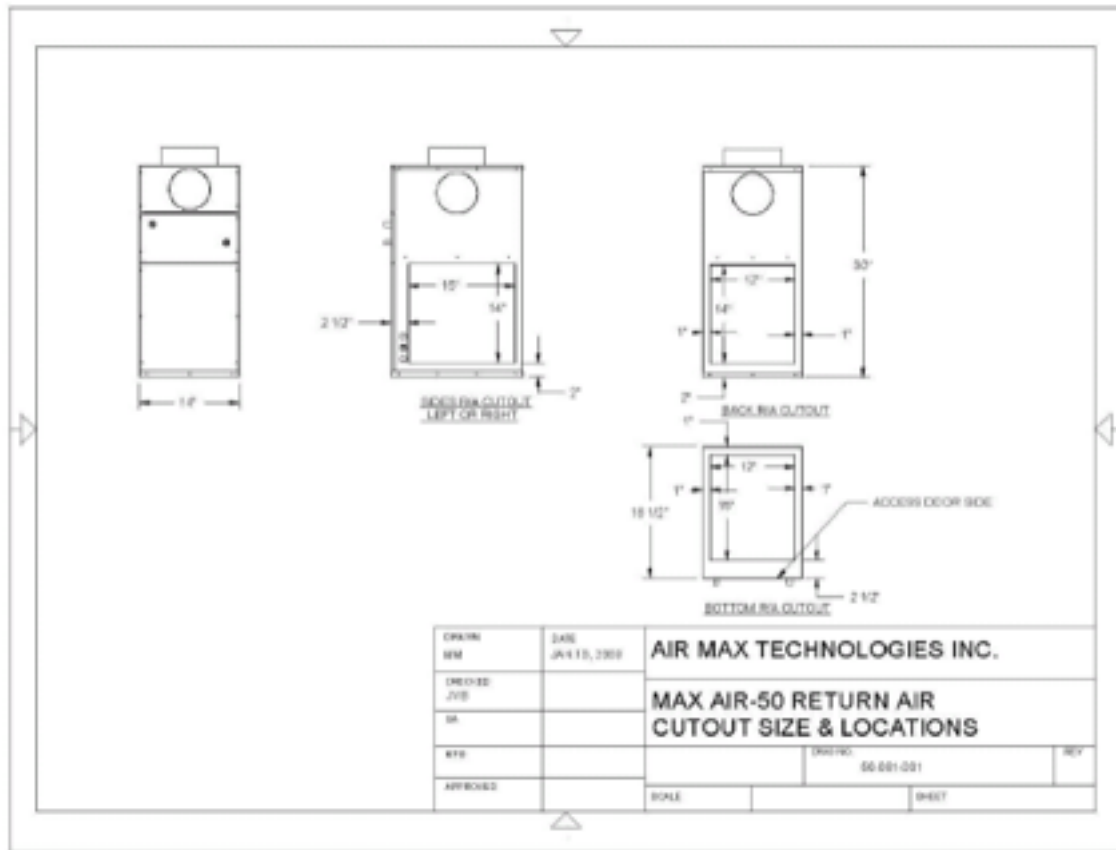
(**) consult factory for 1 ton application regarding reduce capacity and outlet requirement

Features

Accurate Temperature Control / Heating, Cooling or Heating/Cooling Applications / Multi-positional placement / Easily Installed / Easily Serviced / Flexible Outlet locations / Fully adjustable Supply / Multiple Return Options / Compact Size / Extensive Warranty

Accessories

QTY.	Description	R-22	R-410a
	MA24-50 DX Coil c/w self adjusting TXV and Freezestat		
	Diffuser c/w Damper		
	Floor Extension (1.75")		
	Circulating pump (c/w check valve) 1/2" sweat - field installed		



Warranty

1 Year Parts and Labour, plus additional 12 months parts only, where applicable

NOTES: _____

71 Innovation Drive, Unit 8 & 9. Vaughan, Ontario, L4H 0S3. Tel: 905-264-1414, Fax:
905-264-1147