



Job Name:		Contractor:	
Location:		Distributor:	
Engineer:		Date:	
Submitted To:		Model No:	<b>MAX 100"e"</b>
Schedule ID:		No. of Outlets:	

## SUBMITTAL DATA SHEET

<b>Max Air Specifications</b>	<b>Max 100</b>
BTUH Heating @ 180°F E.W.T.	98,593
BTUH Heating @ 170°F E.W.T.	89,630
BTUH Heating @ 160°F E.W.T.	80,666
BTUH Heating @ 150°F E.W.T.	71,704
BTUH Heating @ 140°F E.W.T.	62,741
BTUH Heating @ 130°F E.W.T.	53,500
DX Cooling (tons) <sup>(1)</sup>	2.5 - 3.0
Power	120/1/60
C.F.M. @ 1.5" E.S.P.	950
HP - RPM (fan)	1.0 HP (ECM - DC voltage)
Amps @ 120/1/60	11.6 FLA
G.P.M. Flow Rating	8
Copper Connection Size Ø	3/4"
Supply Air Connection - top	10"
Minimum Outlets	19 <sub>(3)</sub>
Maximum Outlets	<b>25</b>
Return Air Size Required	16" x 16" min.
Physical Dimensions (L/W/H)	36"x25-1/2"x18"

(1) smaller condensers may be matched to fan coil when required ( match txv to condensor size)

(2) dual outlet option available

(3) The median number of outlets should be used to achieve maximum DX cooling capacity for each model size

**Features**

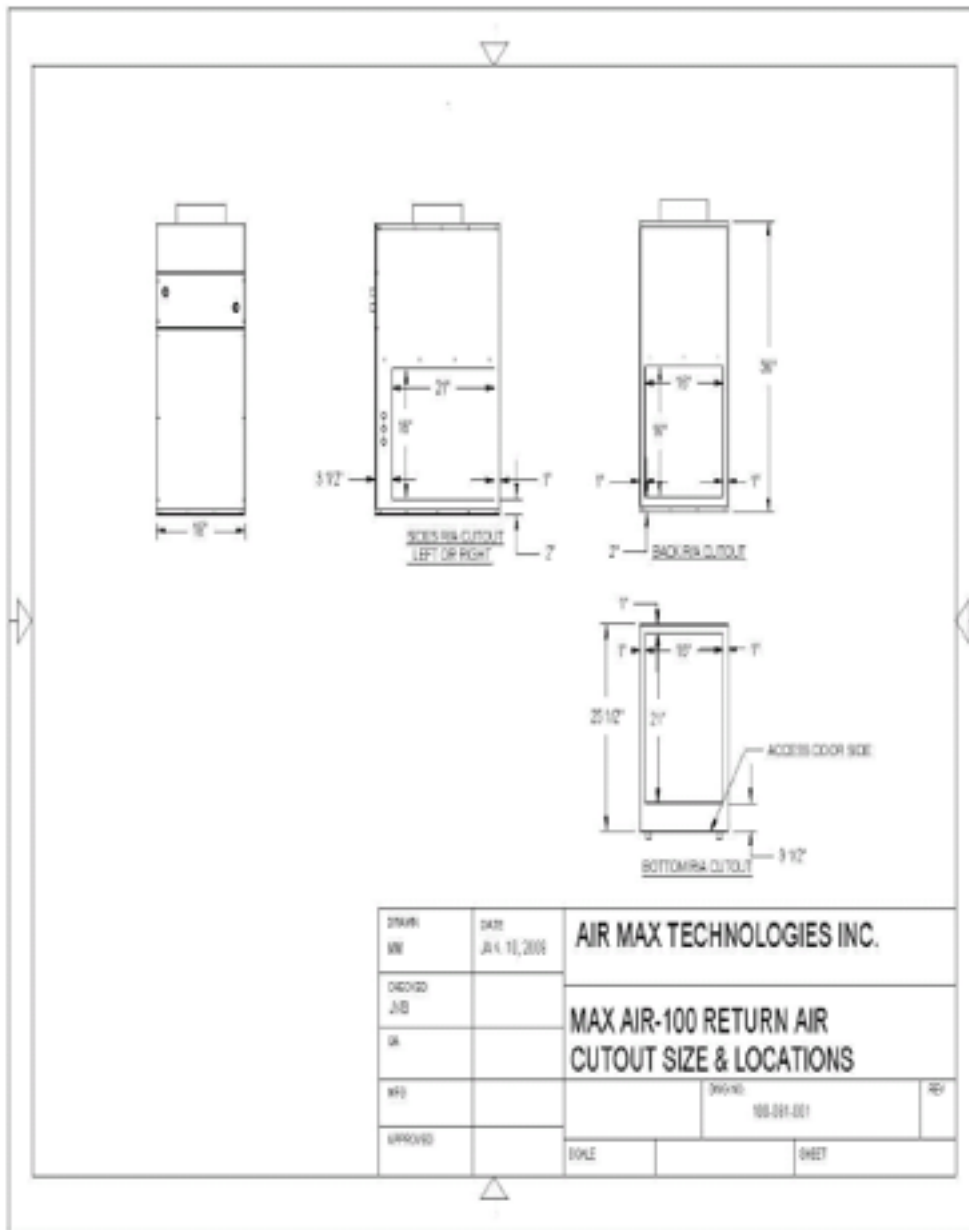
Accurate Temperature Control / Heating, Cooling or Heating/Cooling Applications / Multi-positional placement / Easily Installed / Easily Serviced / Flexible Outlet locations / Fully adjustable Supply / Multiple Return Options / Compact Size / Extensive Warranty

**Accessories**

QTY.	Description	R-22	R-410a
------	-------------	------	--------

	MA36-100 DX Coil c/w self adjusting TXV and Freezestat		
--	--	--	--

	Diffuser c/w Damper
	Floor Extension (1.75")
	Circulating pump (c/w check valve) 3/4" sweat - field installed



**Warranty**

1 Year Parts and Labour, plus additional 12 months parts only, where applicable

**NOTES:**

71 Innovation Drive, Unit 8 & 9. Vaughan, Ont, L4H 0S3. Tel: 905-264-1414, Fax: 905-264-1147