



Job Name:		Contractor:	
Location:		Distributor:	
Engineer:		Date:	
Submitted To:		Model No:	MAX 100
Schedule ID:		No. of Outlets:	

SUBMITTAL DATA SHEET

Max Air Specifications	Max 100
BTUH Heating @ 180°F E.W.T.	98,593
BTUH Heating @ 170°F E.W.T.	89,630
BTUH Heating @ 160°F E.W.T.	80,666
BTUH Heating @ 150°F E.W.T.	71,704
BTUH Heating @ 140°F E.W.T.	62,741
BTUH Heating @ 130°F E.W.T.	53,500
DX Cooling (tons) ⁽¹⁾	2.5 - 3.0
Power	120/1/60
C.F.M. @ 1.5" E.S.P.	952
HP - RPM (fan)	3/4 - 1625
Amps @ 120/1/60	8.7
G.P.M. Flow Rating	8
Copper Connection Size Ø	3/4"
Supply Air Connection - top	10"
Minimum Outlets	19 ₍₃₎
Maximum Outlets	25
Return Air Size Required	16" x 16" min.
Physical Dimensions (L/W/H)	36"x25-1/2"x18"

(1) smaller condensers may be matched to fan coil when required (match txv to condensor size)

(2) dual outlet option available

(3) The median number of outlets should be used to achieve maximum DX cooling capacity for each model size

Features

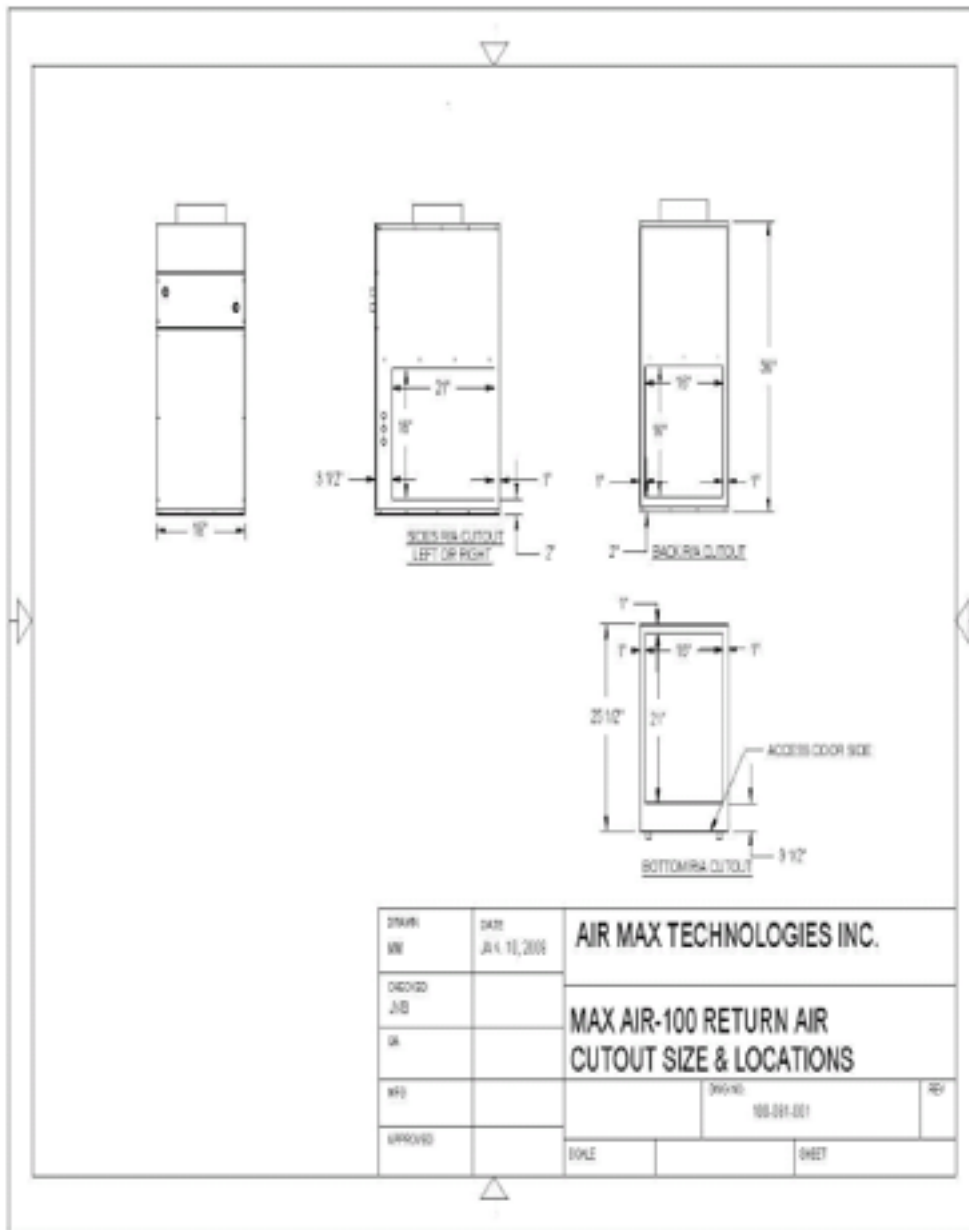
Accurate Temperature Control / Heating, Cooling or Heating/Cooling Applications / Multi-positional placement / Easily Installed / Easily Serviced / Flexible Outlet locations / Fully adjustable Supply / Multiple Return Options / Compact Size / Extensive Warranty

Accessories

QTY.	Description	R-22	R-410a
------	-------------	------	--------

	MA36-100 DX Coil c/w self adjusting TXV and Freezestat		
--	--	--	--

	Diffuser c/w Damper
	Floor Extension (1.75")
	Circulating pump (c/w check valve) 3/4" sweat - field installed



Warranty

1 Year Parts and Labour, plus additional 12 months parts only, where applicable

NOTES:

71 Innovation Drive, Unit 8 & 9. Vaughan, Ont, L4H 0S3. Tel: 905-264-1414, Fax: 905-264-1147