



SUBMITTAL DATA SHEET

Job Name:		Contractor:	
Location:		Distributor:	
Engineer:		Date:	
Submitted To:		Model No:	MAX 70-e-LVHO
Schedule ID:			

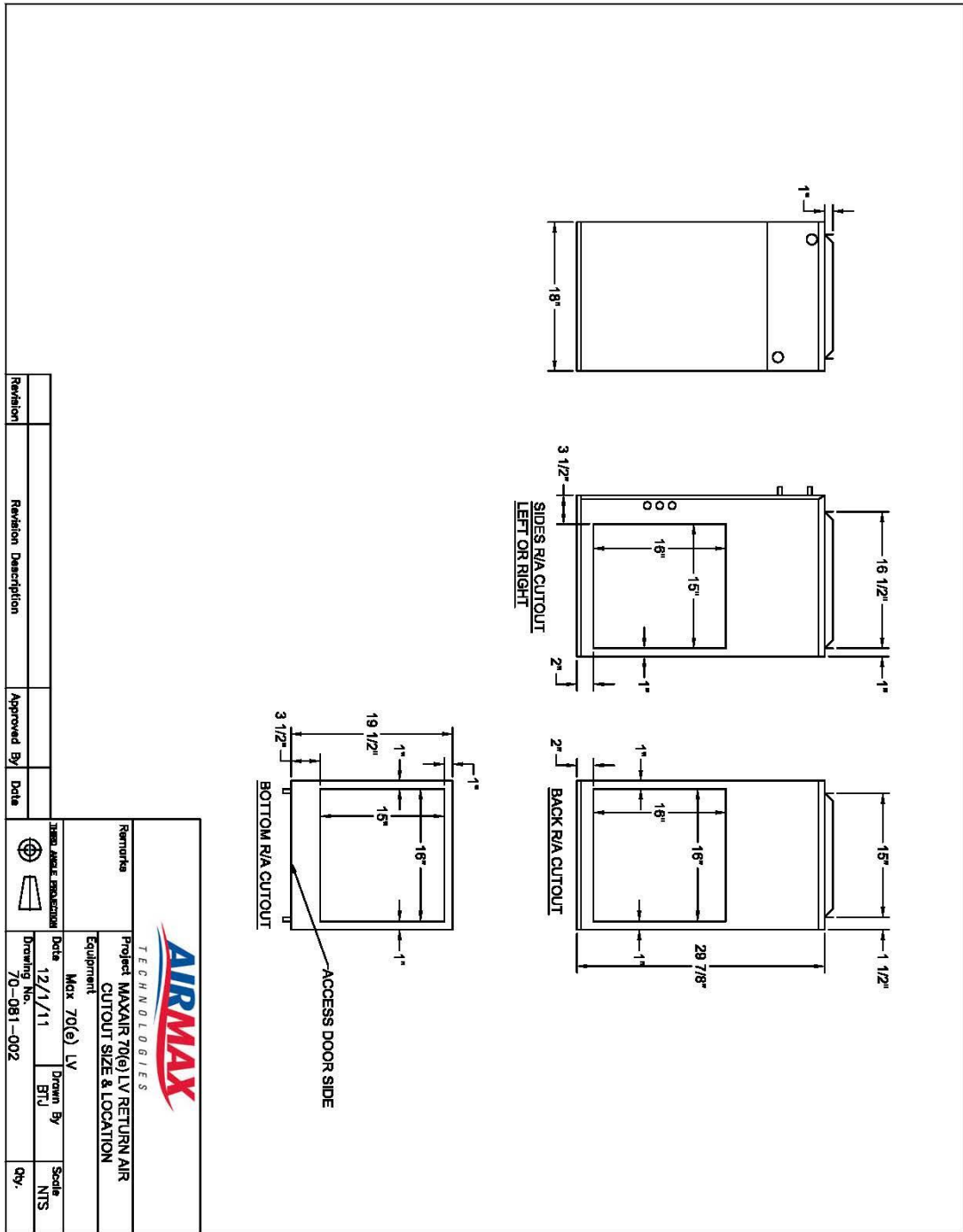
Max Air Specifications	Max 70-e-LVHO
BTUH Heating @ 180°F E.W.T.	103,541
BTUH Heating @ 170°F E.W.T.	93,833
BTUH Heating @ 160°F E.W.T.	84,156
BTUH Heating @ 150°F E.W.T.	74,518
BTUH Heating @ 140°F E.W.T.	64,924
BTUH Heating @ 130°F E.W.T.	55,386
BTUH Heating @ 120°F E.W.T.	45,911
DX Cooling (tons)	3.0t(**)
Power	120/1/60
C.F.M. @ .5" E.S.P.	1200(**)
HP - RPM (fan)	3/4 h.p. – ECM
Amps @ 120/1/60	9.6
G.P.M. Flow Rating	7
Copper Connection Size \emptyset	3/4"
Supply Air Connection - top	15" x 16-1/2"
Return Air Size Required	15" x 16" min.
Physical Dimensions (L/W/H)	29-7/8"x18"x19-1/2"

(**) consult factory for applications requiring reduce capacity



Features

Accurate Temperature Control / 2-stage Heating, 2-stage Cooling or 2-stage Heating/Cooling Applications / Multiple CFM Options / Loop Sensing Control Option / Multi-positional placement / Easily Installed / Easily Serviced / Multiple Return Options / Compact Size / Extensive Warranty



Warranty

1 Year Parts and Labour, plus additional 12 months parts only, where applicable

NOTES: _____

