



## SUBMITTAL DATA SHEET

Job Name:		Contractor:	
Location:		Distributor:	
Engineer:		Date:	
Submitted To:		Model No:	<b>MAX 30-e-LV</b>
Schedule ID:			

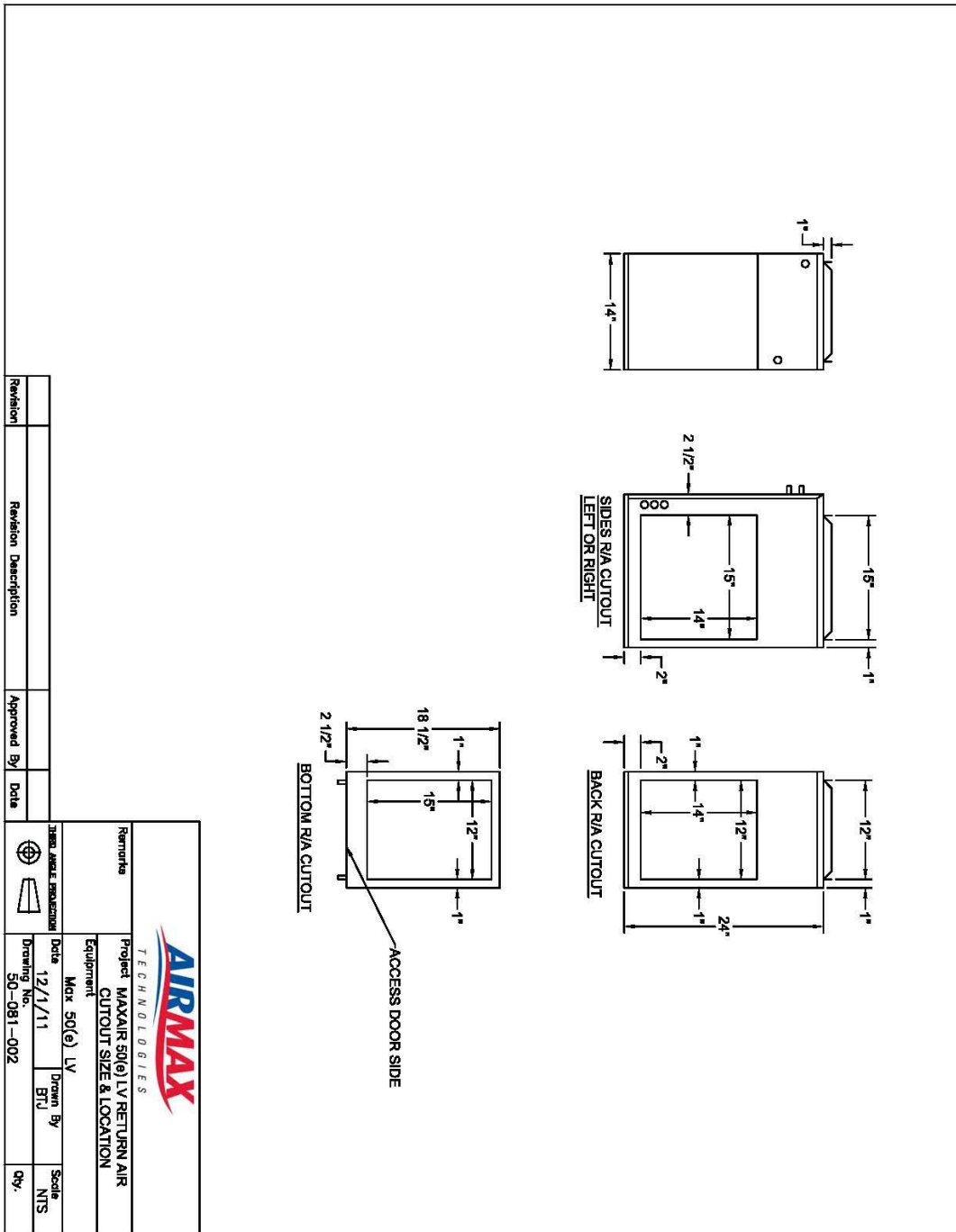
<b>Max Air Specifications</b>	<b>Max 30-e-LV</b>
BTUH Heating @ 180°F E.W.T.	46,236
BTUH Heating @ 170°F E.W.T.	41,983
BTUH Heating @ 160°F E.W.T.	37,735
BTUH Heating @ 150°F E.W.T.	33,492
BTUH Heating @ 140°F E.W.T.	29,257
BTUH Heating @ 130°F E.W.T.	25,031
DX Cooling (tons) <sup>(1)</sup>	1.0(**)
Power	120/1/60
C.F.M. @ .5" E.S.P.	425(**)
HP - RPM (fan)	1/3 – 1250 - ECM
Amps @ 120/1/60	5.3
G.P.M. Flow Rating	5
Copper Connection Size Ø	1/2"
Supply Air Connection - top	11" x 16"
Return Air Size Required	12" x 14" min.
Physical Dimensions (L/W/H)	24"x14"x18-1/2"

(\*\*) consult factory for application requiring reduce capacity



### Features

Accurate Temperature Control / 2-stage Heating, 2-stage Cooling or 2-stage Heating/Cooling Applications / Multiple CFM Options / Loop Sensing Control Option / Multi-positional placement / Easily Installed / Easily Serviced / Multiple Return Options / Compact Size / Extensive Warranty



**Warranty**

1 Year Parts and Labour, plus additional 12 months parts only, where applicable

NOTES: \_\_\_\_\_  
 \_\_\_\_\_  
 \_\_\_\_\_