



## SUBMITTAL DATA SHEET

Job Name:		Contractor:	
Location:		Distributor:	
Engineer:		Date:	
Submitted To:		Model No:	<b>MAX 100-e-LV</b>
Schedule ID:			

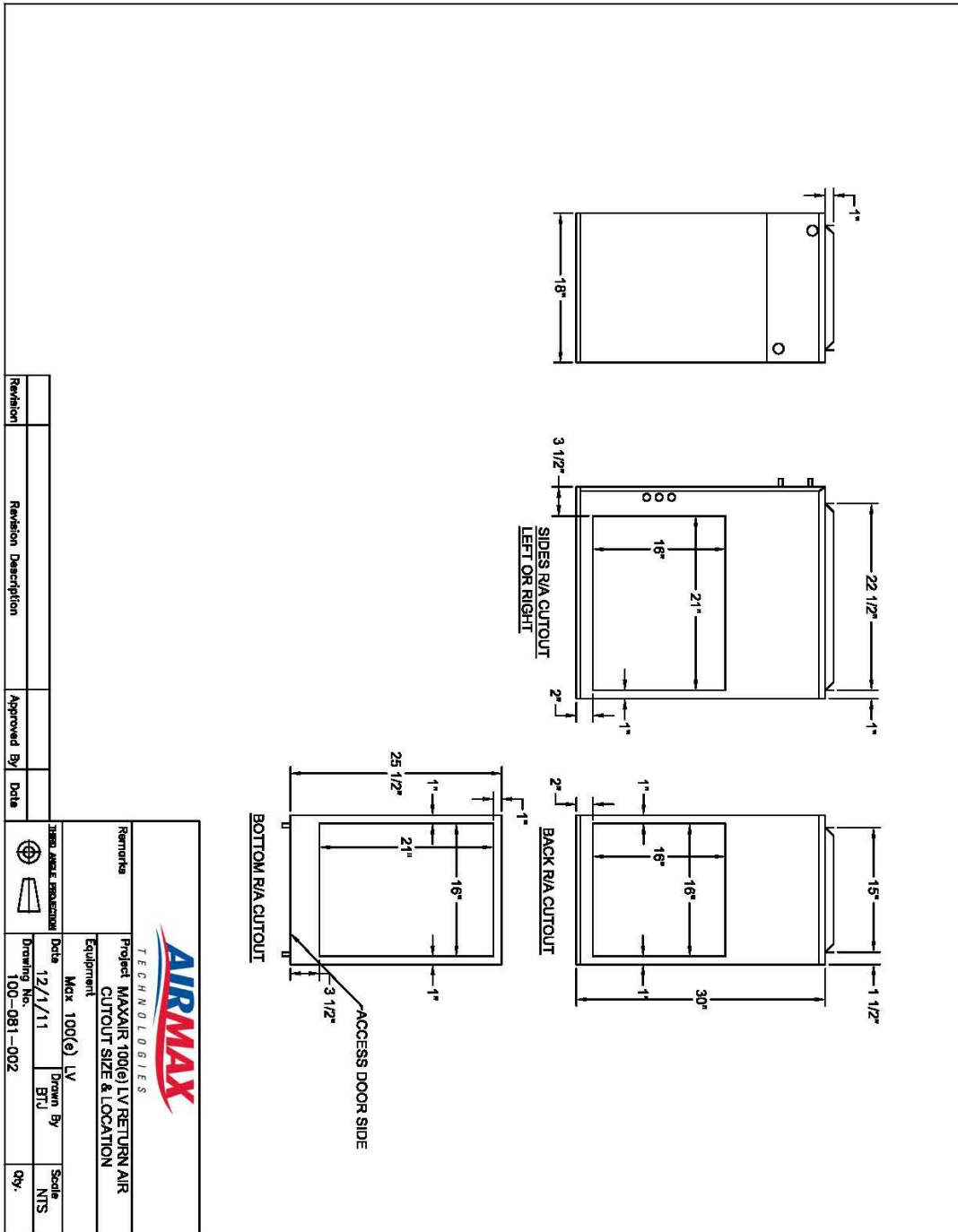
<b>Max Air Specifications</b>	<b>Max 100-e-LV</b>
BTUH Heating @ 180°F E.W.T.	138,519
BTUH Heating @ 170°F E.W.T.	125,601
BTUH Heating @ 160°F E.W.T.	112,715
BTUH Heating @ 150°F E.W.T.	99,870
BTUH Heating @ 140°F E.W.T.	87,074
BTUH Heating @ 130°F E.W.T.	74,338
BTUH Heating @ 120°F E.W.T.	61,673
DX Cooling (tons)	4.0t(**)
Power	120/1/60
C.F.M. @ .5" E.S.P.	1580(**)
HP - RPM (fan)	1.0 h.p. – ECM
Amps @ 120/1/60	11.4
G.P.M. Flow Rating	8
Copper Connection Size $\emptyset$	3/4"
Supply Air Connection - top	15" x 22-1/2"
Return Air Size Required	16" x 16" min.
Physical Dimensions (L/W/H)	30"x18"x25-1/2"

(\*\*) consult factory for applications requiring reduce capacity



### Features

Accurate Temperature Control / 2-stage Heating, 2-stage Cooling or 2-stage Heating/Cooling Applications / Multiple CFM Options / Loop Sensing Control Option / Multi-positional placement / Easily Installed / Easily Serviced / Multiple Return Options / Compact Size / Extensive Warranty



**Warranty**

1 Year Parts and Labour, plus additional 12 months parts only, where applicable

NOTES: \_\_\_\_\_  
 \_\_\_\_\_  
 \_\_\_\_\_