



## SUBMITTAL DATA SHEET

Job Name:		Contractor:	
Location:		Distributor:	
Engineer:		Date:	
Submitted To:		Model No:	<b>Max 70 "e"</b>
Schedule ID:		No. of Outlets:	

<b>Max Air Specifications</b>	<b>Max 70-"e"</b>
BTUH Heating @ 180°F E.W.T.	77,981
BTUH Heating @ 170°F E.W.T.	69,804
BTUH Heating @ 160°F E.W.T.	58,902
BTUH Heating @ 150°F E.W.T.	50,519
BTUH Heating @ 140°F E.W.T.	46,278
BTUH Heating @ 130°F E.W.T.	41,000
DX Cooling (tons) <sup>(1)</sup>	2.0 - 2.5
Power	120/1/60
C.F.M. @ 1.5" E.S.P.	750
HP - RPM (fan)	3/4 HP (ECM – DC voltage)
Amps @ 120/1/60	9.9 FLA
G.P.M. Flow Rating	7
Copper Connection Size Ø	1/2"
Supply Air Connection - top	8" <sup>(2)</sup>
Minimum Outlets	16 <sup>(3)</sup>
Maximum Outlets	<b><u>20</u></b>
Return Air Size Required	16" x 15" min.
Physical Dimensions (L/W/H)	36"x19-1/2"x18"

<sup>(1)</sup> smaller condensers may be matched to fan coil when required ( match txv to condensor size)

<sup>(2)</sup> dual outlet option available

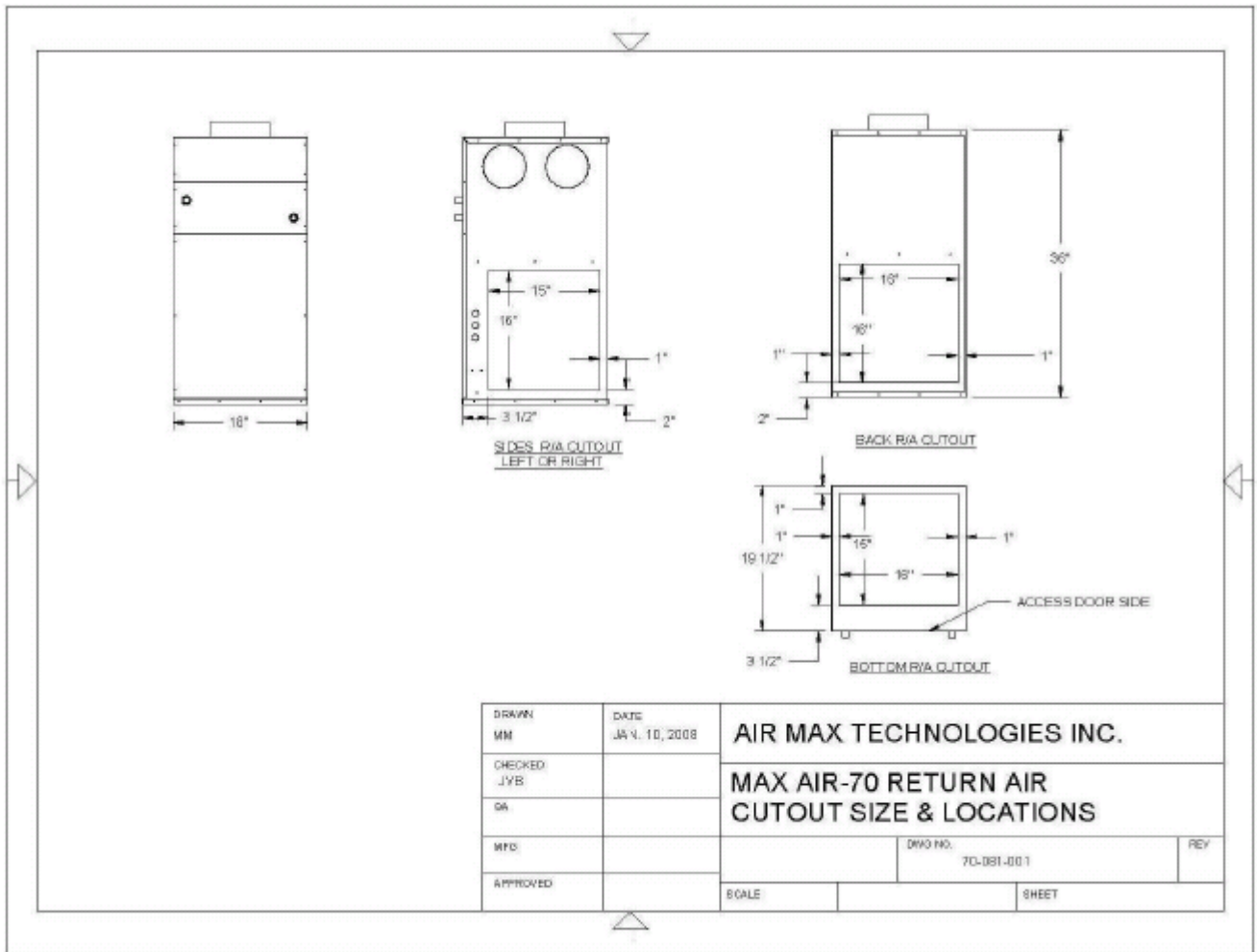
<sup>(3)</sup> The median number of outlets should be used to achieve maximum DX cooling capacity for each model size

### Features

Accurate Temperature Control / Heating, Cooling or Heating/Cooling Applications / Multi-positional placement / Easily Installed / Easily Serviced / Flexible Outlet locations / Fully adjustable Supply / Multiple Return Options / Compact Size / Extensive Warranty

## Accessories

QTY.	Description	R-22	R-410a
	MA30-70 DX Coil c/w self adjusting TXV and Freezestat		
	Diffuser c/w Damper		
	Floor Extension (1.75")		
	Circulating pump (c/w check valve) 3/4" sweat - field installed		



## Warranty

1 Year Parts and Labour, plus additional 12 months parts only, where applicable

NOTES: \_\_\_\_\_  
 \_\_\_\_\_  
 \_\_\_\_\_  
 \_\_\_\_\_