



SUBMITTAL DATA SHEET

Job Name:		Contractor:	
Location:		Distributor:	
Engineer:		Date:	
Submitted To:		Model No:	MAX 50
Schedule ID:		No. of Outlets:	

Max Air Specifications	Max 50
BTUH Heating @ 180°F E.W.T.	55,649
BTUH Heating @ 170°F E.W.T.	49,971
BTUH Heating @ 160°F E.W.T.	44,700
BTUH Heating @ 150°F E.W.T.	39,086
BTUH Heating @ 140°F E.W.T.	35,195
BTUH Heating @ 130°F E.W.T.	30,250
DX Cooling (tons) ⁽¹⁾	1.0(**) - 2.0
Power	120/1/60
C.F.M. @ 1.5" E.S.P.	580
HP - RPM (fan)	1/2 - 1625
Amps @ 120/1/60	6.2
G.P.M. Flow Rating	5
Copper Connection Size Ø	1/2"
Supply Air Connection - top	8" ⁽²⁾
Minimum Outlets	13 ⁽³⁾
Maximum Outlets	<u>17</u>
Return Air Size Required	12" x 14" min.
Physical Dimensions (L/W/H)	30"x14"x18-1/2"

⁽¹⁾ smaller condensers may be matched to fan coil when required (match txv to condensor size)

⁽²⁾ dual outlet option available

⁽³⁾ The median number of outlets should be used to achieve maximum DX cooling capacity for each model size

(**) consult factory for 1 ton application regarding reduce capacity and outlet requirement

Features

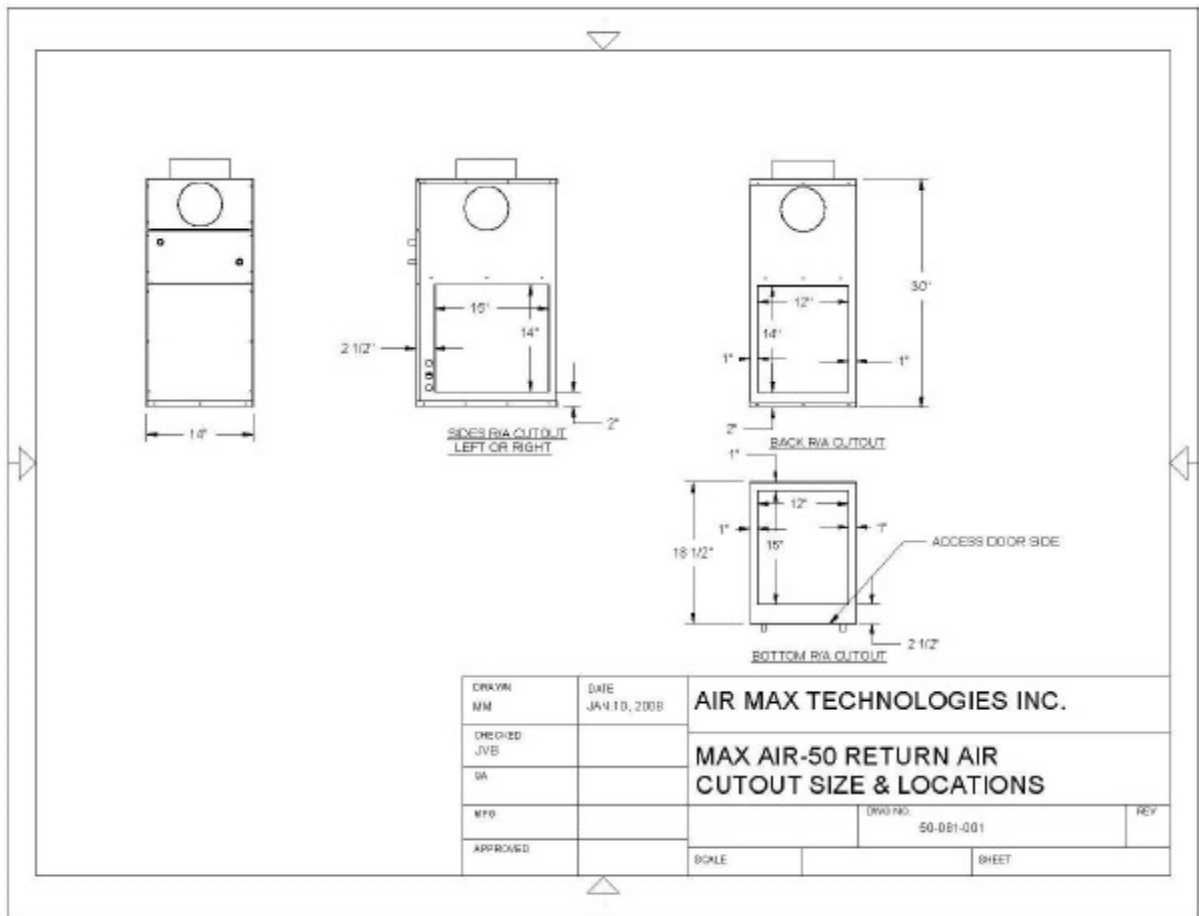
Accurate Temperature Control / Heating, Cooling or Heating/Cooling Applications / Multi-positional placement / Easily Installed / Easily Serviced / Flexible Outlet locations / Fully adjustable Supply / Multiple Return Options / Compact Size / Extensive Warranty

Accessories

QTY.	Description	R-22	R-410a
------	-------------	------	--------

	MA24-50 DX Coil c/w self adjusting TXV and Freezestat		
--	---	--	--

	121-001 Diffuser c/w Damper		
	125-001 Rough-In Kit (includes elbow, dust cap + take-off)		
	107-001 Floor Extension riser (1.75")		
	123-001 10' 2.5" flex duct assembly with connector		
	124-001 5' 2.5" flex duct assembly with connector		
	Circulating pump (c/w check valve) 1/2" sweat - field installed		



Warranty

1 Year Parts and Labour, plus additional 12 months parts only, where applicable

NOTES: _____
