



SUBMITTAL DATA SHEET

Job Name:		Contractor:	
Location:		Distributor:	
Engineer:		Date:	
Submitted To:		Model No:	MAX 30 "e"
Schedule ID:		No. of Outlets:	

Max Air Specifications	Max 30 "e"
BTUH Heating @ 180°F E.W.T.	39,382
BTUH Heating @ 170°F E.W.T.	35,769
BTUH Heating @ 160°F E.W.T.	32,159
BTUH Heating @ 150°F E.W.T.	28,553
BTUH Heating @ 140°F E.W.T.	24,951
BTUH Heating @ 130°F E.W.T.	21,356
TX Cooling (tons) ⁽¹⁾	1.0(**)
Power	120/1/60
C.F.M. @ 1.5" E.S.P.	350
HP - RPM (fan)	1/3 – 1.625
Amps @ 120/1/60	4.6
G.P.M. Flow Rating	5
Copper Connection Size Ø	1/2"
Supply Air Connection - top	8" ⁽²⁾
Minimum Outlets	7 ⁽³⁾
Maximum Outlets	11
Return Air Size Required	12" x 14" min.
Physical Dimensions (L/W/H)	30"x14"x18-1/2"

⁽¹⁾ smaller condensers may be matched to fan coil when required (match txv to condensor size)

⁽²⁾ dual outlet option available

⁽³⁾ The median number of outlets should be used to achieve maximum DX cooling capacity for each model size

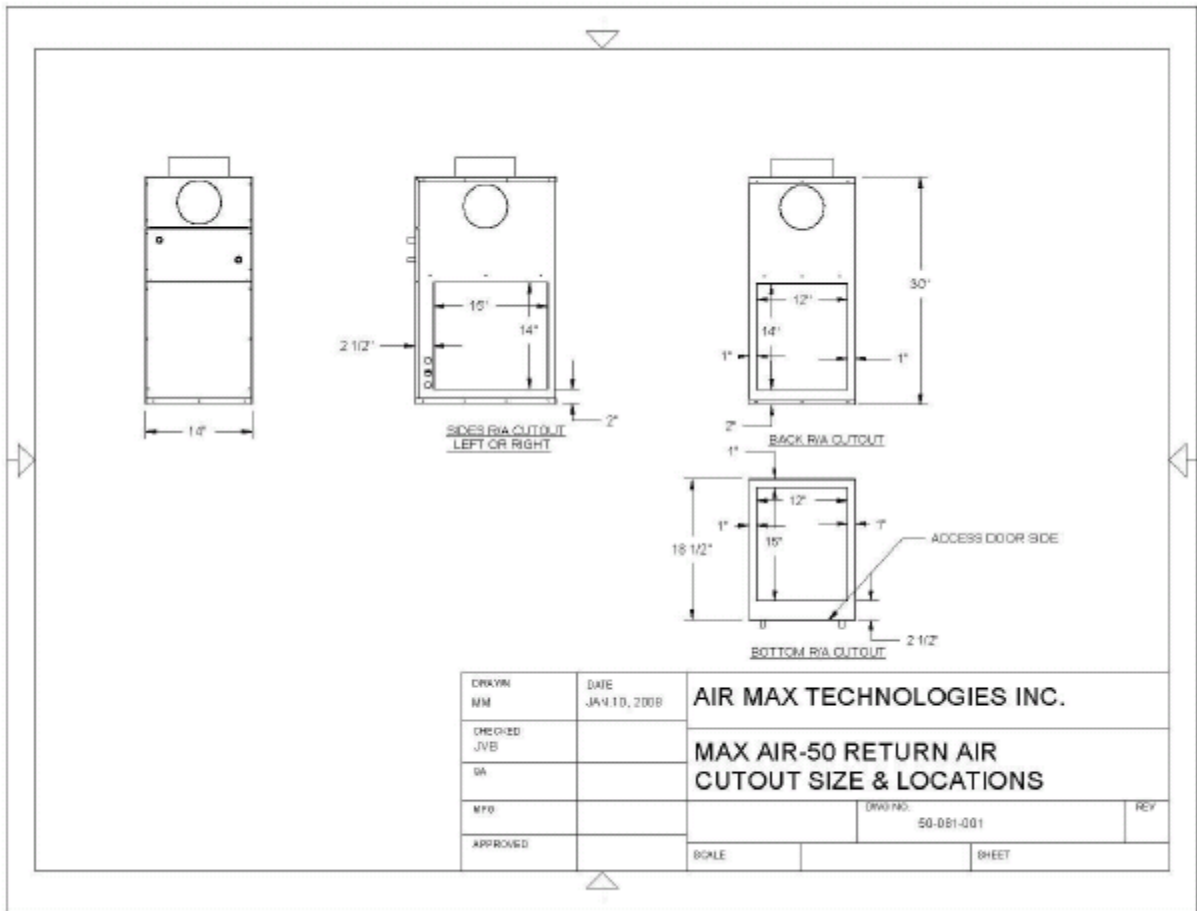
(**) consult factory for 1 ton application regarding reduce capacity and outlet requirement

Features

Accurate Temperature Control / Heating, Cooling or Heating/Cooling Applications / Multi-positional placement / Easily Installed / Easily Serviced / Flexible Outlet locations / Fully adjustable Supply / Multiple Return Options / Compact Size / Extensive Warranty

Accessories

QTY.	Description	R-22	R-410a
	MA24-50 DX Coil c/w self adjusting TXV and Freezestat		
	Diffuser c/w Damper		
	Floor Extension (1.75")		
	Circulating pump (c/w check valve) 1/2" sweat - field installed		



NOTE: Dimensions for MAXAIR 30 are the same as the MAXAIR 50

Warranty

1 Year Parts and Labour, plus additional 12 months parts only, where applicable

NOTES: _____

